

Westlands

Key information including fees



Requires improvement

Last rated:
22 March 2023



Free WiFi at this home

Emma Lingard

Home Manager



Current fees for this home



No deposit required



Residential care rate from
(per week)

£1050



Dementia and/or higher care
needs rate from (per week)

£1150



Respite
care

£100 less per week for stays of up to 3 weeks



Please note that fees are based on your choice of room and care needs. If you have any more questions about funding or need further advice please speak to the home's Trusted Advisor on 01788 576 604 (press 1)



Fees are payable one month in advance on the first day of each month, by direct debit. Fees are reviewed annually and will usually rise by no more than 2.0% above the percentage increase in National Living Wage (except in exceptional circumstances)



What's included in your weekly fee

Services including...

- room accommodation
- heating and lighting
- laundry services
- access to TV and sitting rooms
- food
- non-alcoholic drinks
- snacks
- Memory Maker minibus transport and carer costs

Personal care including...

- care and support from staff
- use of aids and appliances available in the home such as hoists, lifts and occasional use wheelchairs



Services paid for separately

Typical services paid for separately include...

- daily papers
- hairdressing charges
- clothing
- dry cleaning
- personal toiletries
- meals for your visitors
- chiropody
- entry fees for outings e.g. National Trust
- private healthcare not covered by the NHS
- travel costs e.g. public or private transport to medical appointments

Funding types accepted at this home



Socially funded e.g. local authority



Privately funded e.g. your own funds



CHC or similar

Summary of key information

Key features at Westlands - Oliver Street, Rugby, CV21 2EX

Westlands is home for up to 41 older people and people living with dementia, providing residential care and short-term respite care. It typically has a staffing ratio of one member of staff to five residents. Facilities at the home include:



Single rooms



Ensuite facilities in some rooms



Household kitchens



Communal lounges & TVs



Lift to each floor



Hair salon



Cafe



Conservatory



Gardens



Patio area



Trips on the Memory Maker minibus



On-site parking



Close to local amenities



On a bus route

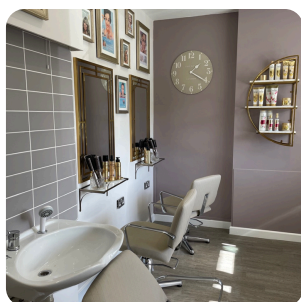
At every WCS Care home:



Electronic care planning



Free WiFi



What people say about Westlands

THIS IS TO CERTIFY THAT

Westlands

HAS A CAREHOME.CO.UK

REVIEW SCORE OF

9.8

January 2026

Maximum Review Score is 10, and the Score was calculated from 16 Reviews made by residents or family/friends of residents.

★★★★★

3 Dec 2025

My mum moved into Westlands Care home in August and she is very happy there. She tells me the food...

Ann H (Daughter of Resident)

★★★★★

9 Sep 2025

My mum moved into Westlands a few months ago following a number of falls at home. From day one all...

A B (Daughter of Resident)

As at 6th January 2026 - find more reviews for Westlands at carehome.co.uk

carehome.co.uk



Important terms and conditions

Deposits including damage charges

We do not require an upfront deposit. We also won't charge a fee to replace carpets or redecorate your room if you vacate it (known as a dilapidation fee).

Running out of private funding

We'll support privately-funded residents to apply for social funding, if their financial situation means they can no longer meet the requirements for privately-funded care, so we will not ask residents to move out.

Notice conditions

If you wish to end your contract with us, please notify the home manager in writing with these notice periods: within 14 days of signing the contract (immediately); before your six-week trial ends (at least 7 days); after your six-week trial (at least four weeks).