

Dewar Close

Key information including fees



Good

Last rated:
9 July 2025



Entrance

Dewar Close



Free WiFi at this home

Tara Locke

Home Manager



Current fees for this home

✓ No deposit required



Residential care rate from
(per week)

£1150



Dementia and/or higher care
needs rate from (per week)

£1250



Respite
care

£100 less per week for stays of up to 3 weeks



Please note that fees are based on your choice of room and care needs. If you have any more questions about funding or need further advice please speak to the home's Trusted Advisor on 01788 811 724 (press 1)



Fees are payable one month in advance on the first day of each month, by direct debit. Fees are reviewed annually and will usually rise by no more than 2.0% above the percentage increase in National Living Wage (except in exceptional circumstances)



What's included in your weekly fee

Services including...

- room accommodation
- heating and lighting
- laundry services
- access to TV and sitting rooms
- food
- non-alcoholic drinks
- snacks
- Memory Maker minibus transport and carer costs

Personal care including...

- care and support from staff
- use of aids and appliances available in the home such as hoists, lifts and occasional use wheelchairs



Services paid for separately

Typical services paid for separately include...

- daily papers
- hairdressing charges
- clothing
- dry cleaning
- personal toiletries
- meals for your visitors
- chiropody
- entry fees for outings e.g. National Trust
- private healthcare not covered by the NHS
- travel costs e.g. public or private transport to medical appointments

Funding types accepted at this home



Socially funded e.g. local authority



Privately funded e.g. your own funds



CHC or similar

Summary of key information

Key features at Dewar Close - 5 Beech Drive, Bilton, Rugby, CV22 7LT

Dewar Close is home for up to 43 older people and people living with dementia, providing residential care and short-term respite care. It typically has a staffing ratio of one member of staff to five residents. Facilities at the home include:



Single rooms



Ensuite facilities
in most rooms



Household
kitchen



Communal
lounge & TV



Lift to each
floor



Hair salon



Cafe



Conservatory



Gardens



Patio area



Bike-for-two



Trips on the Memory
Maker minibus



Close to
amenities

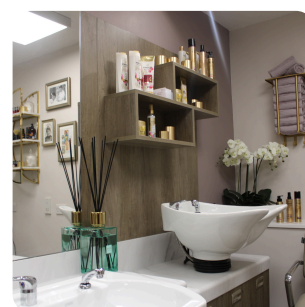
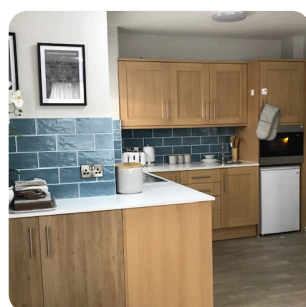
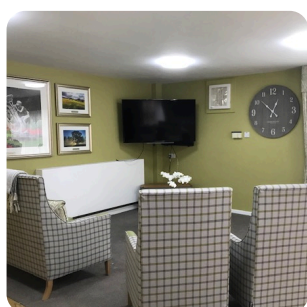
At every WCS Care home:



Electronic care planning



Free Wi-Fi



What people say about Dewar Close

THIS IS TO CERTIFY THAT
Dewar Close
HAS A CAREHOME.CO.UK
REVIEW SCORE OF

9.8

December 2025
Maximum Review Score is 10, and the
Score was calculated from 13 Reviews made
by residents or family/friends of residents.



2 Dec 2025

Myself and my wife felt very welcome
every time we visited. Also the facial
recognition on the...

Keith S (Son-in-law of Resident)



2 Dec 2025

Both of my parents became residents
at Dewar Close a year ago. The staff
are all very kind,...

Susan R (Daughter of Resident)

As at 8th December 2025 - find more reviews for Dewar Close at carehome.co.uk

carehome.co.uk



Important terms and conditions

Deposits including damage charges

We do not require an upfront deposit.
We also won't charge a fee to replace
carpets or redecorate your room if you
vacate it (known as a dilapidation fee).

Running out of private funding

We'll support privately-funded
residents to apply for social funding,
if their financial situation means they
can no longer meet the requirements
for privately-funded care, so we will
not ask residents to move out.

Notice conditions

If you wish to end your contract with us,
please notify the home manager in writing
with these notice periods: within 14 days of
signing the contract (immediately); before
your six-week trial ends (at least 7 days);
after your six-week trial (at least four weeks).