

# Woodside Care Village

## Key information including fees



**Good**

Last rated:  
11 November 2022



Free WiFi at this home

Lorraine Herbert

General Manager



### Current fees for this home



**No deposit required**



**Residential care rate from**  
(per week)

**£1250**



**Dementia and/or higher care**  
**needs rate from** (per week)

**£1350**



Please note that fees are based on your choice of room and care needs. If you have any more questions about funding or need further advice please speak to the home's Trusted Advisor on 01926 569 300 (press 1).



Fees are payable one month in advance on the first day of each month, usually by direct debit. Fees are reviewed annually and will usually rise by no more than 2.0% above the percentage increase in National Living Wage (except in exceptional circumstances)



### What's included in your weekly fee

#### Services including...

- room accommodation
- heating and lighting
- laundry services
- access to TV and sitting rooms
- food
- non-alcoholic drinks
- snacks
- Memory Maker minibus transport and carer costs

#### Personal care including...

- care and support from staff
- use of aids and appliances available in the home such as hoists, lifts and occasional use wheelchairs



### Services paid for separately

#### Typical services paid for separately include...

- daily papers
- hairdressing charges
- clothing
- dry cleaning
- personal toiletries
- meals for your visitors
- chiropody
- entry fees for outings e.g. National Trust
- private healthcare not covered by the NHS
- travel costs e.g. public or private transport to medical appointments

### Funding type accepted at this home



**Privately funded e.g. your own funds**



**CHC or similar**



**Socially funded with top-up**

## Summary of key information

### Key features at Woodside Care Village - Maple Grove (off Spinney Hill), Warwick, CV34 5SS

Woodside Care Village is home for up to 72 older people, people living with dementia and people who are deaf, providing residential care and short-term respite care. It typically has a staffing ratio of 1 member of staff to 3/4 residents. Facilities at the home include:



Single rooms



Ensuite facilities



Household kitchen



Communal lounge & TV



Small households



Outdoor gym



Gardens



Mini golf



Bike-for-two



Giant outdoor chess



Table tennis



Laundrette



Hair salon



Shop



Cafe



Kids zone



Spa bath



Cinema



Memory Maker minibus



Acoustic monitoring



Fire lift to all floors



Circadian lighting



Staff trained in sign language



On a bus route

At every WCS Care home:



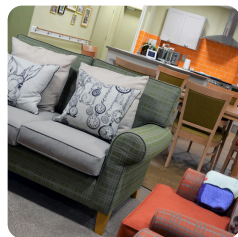
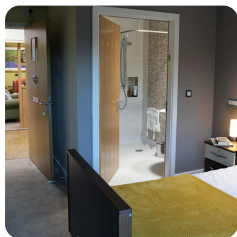
Electronic care planning



Relatives' Gateway



Free WiFi



## What people say about Woodside Care Village



14 Mar 2025

My friend is really happy at Woodside Care home and I am confident that this was the right place...

Sylvia K (Friend of Resident)



24 Dec 2024

I am very satisfied with my mum being at Woodside Care Village, as I have looked after her for nine...

Gill M (Daughter of Resident)

As at 6 May 2025 - find more reviews for Woodside Care Village at [carehome.co.uk](https://carehome.co.uk)

[carehome.co.uk](https://carehome.co.uk)



## Important terms and conditions

### Deposits including damage charges

We do not require an upfront deposit. We also won't charge a fee to replace carpets or redecorate your room if you vacate it (known as a dilapidation fee).

### Running out of private funding

We'll support privately-funded residents to apply for social funding, if their financial situation means they can no longer meet the requirements for privately-funded care, so we will not ask residents to move out.

### Notice conditions

If you wish to end your contract with us, please notify the home manager in writing with these notice periods: within 14 days of signing the contract (immediately); before your six-week trial ends (at least 7 days); after your six-week trial (at least four weeks).