

The Limes

Key information including fees



Good

Last rated:
4 March 2025



Free WiFi at this home

Karen Hall

Home Manager



Current fees for this home



No deposit required



Residential care rate from
(per week)

£1050



Dementia and/or higher care
needs rate from (per week)

£1150

Respite
care

£100 less per week for stays of up to 3 weeks



Please note that fees are based on your choice of room and care needs. If you have any more questions about funding or need further advice please speak to the home's Trusted Advisor on 01789 267 076 (press 1)



Fees are payable one month in advance on the first day of each month, usually by standing order. Fees are reviewed annually and will usually rise by no more than 2.0% above the percentage increase in National Living Wage (except in exceptional circumstances)



What's included in your weekly fee

Services including...

- room accommodation
- heating and lighting
- laundry services
- access to TV and sitting rooms
- food
- non-alcoholic drinks
- snacks

Personal care including...

- care and support from staff
- use of aids and appliances available in the home such as hoists, lifts and occasional use wheelchairs



Services paid for separately

Typical services paid for separately include...

- daily papers
- hairdressing charges
- clothing
- dry cleaning
- personal toiletries
- meals for your visitors
- chiropody
- costs of special outings and events
- private healthcare not covered by the NHS
- travel costs e.g. public or private transport to medical appointments

Funding type accepted at this home



Socially funded with top-up



Privately funded e.g. your own funds



CHC or similar

Summary of key information

Key features at The Limes - Alcester Road, Stratford-upon-Avon, CV37 6PH

The Limes is home for up to 30 older people and people living with dementia, providing residential care and short-term respite care. It typically has a staffing ratio of one member of staff to five residents. Facilities at the home include:



Single rooms



Ensuite facilities in most rooms



Household kitchen



Communal lounge & TV



Lift to each floor



Gardens



Patio area



Visiting pod/rooms



Conservatory



On-site parking



On a bus route



Close to local amenities

At every WCS Care home:



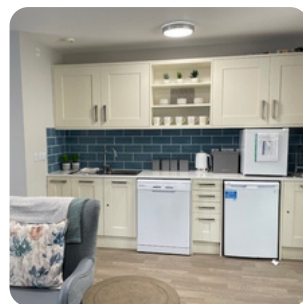
Electronic care planning



Relatives' Gateway



Trips on the Memory Maker Minibus



What people say about The Limes

THIS IS TO CERTIFY THAT

The Limes

HAS A CAREHOME.CO.UK REVIEW SCORE OF



February 2025

Maximum Review Score is 10, and the Score was calculated from 11 Reviews made by residents or family/friends of residents.



27 Feb 2025



18 Feb 2025

My mum was a resident for 9 years at The Limes. She passed away in July 2024. She always received...

Wendy C (Daughter of Resident)

Not all the staff are satisfactory.

David C (Husband of Resident)

As at 30th May 2025 - find more reviews for The Limes at carehome.co.uk

carehome.co.uk



Important terms and conditions

Deposits including damage charges

We do not require an upfront deposit. We also won't charge a fee to replace carpets or redecorate your room if you vacate it (known as a dilapidation fee).

Running out of private funding

We'll support privately-funded residents to apply for social funding, if their financial situation means they can no longer meet the requirements for privately-funded care, so we will not ask residents to move out.

Notice conditions

If you wish to end your contract with us, please notify the home manager in writing with these notice periods: within 14 days of signing the contract (immediately); before your six-week trial ends (at least 7 days); after your six-week trial (at least four weeks).

