

Four Ways

Key information including fees



Requires improvement

Last rated:
12 September 2019



Free WiFi at this home


Louise Spann


Home Manager



Valid from 01 April 2021

Fees for this home

 Residential care rate (per week) **£827**

 Dementia/advanced residential care rate (per week) **£1020**

 Additional supplements (per week - if applicable)

Premium room	£59
Ensuite	£20



Fees are payable one month in advance on the first day of each month, usually by standing order. Fees are reviewed annually and will rise by no more than 2.0% above the percentage increase in National Living Wage

How fees compare with other providers locally



As a guide, other providers' fees for residential and dementia care homes (older people) in Leamington Spa range from approximately **£650** to **£1600** per week*

Funding type accepted at this home



Socially funded e.g. local authority



Privately funded e.g. your own funds



CHC or similar



What's included in your weekly fee

Services including...

- room accommodation
- heating and lighting
- laundry services
- access to TV and sitting rooms
- food
- non-alcoholic drinks
- snacks

Personal care including...

- care and support from staff
- use of aids and appliances available in the home such as hoists, lifts and occasional use wheelchairs



Lifestyle services paid for separately

Typical services paid for separately include...

- daily papers
- hairdressing charges
- clothing
- dry cleaning
- personal toiletries
- meals for your visitors
- chiropody
- costs of special outings and events
- private healthcare not covered by the NHS
- travel costs e.g. public or private transport to medical appointments

Summary of key information

Key features at Four Ways - Mason Avenue, Lillington, Leamington Spa, CV32 7PE

Four Ways is home for up to 47 older people and people living with dementia, providing residential care and short-term respite care. It typically has a staffing ratio of one member of staff to five residents. Facilities at the home include:



Single rooms



Ensuite facilities in some rooms



Household kitchen



Communal lounge & TV



Lift to each floor



Gardens



Patio area



Hair salon



Visiting pod/rooms



Conservatory



Cafe



On a bus route



Close to local amenities

At every WCS Care home:



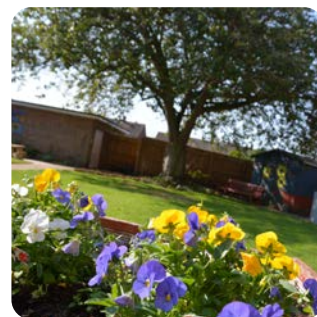
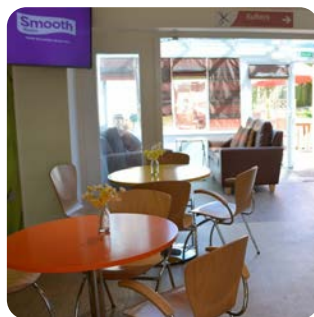
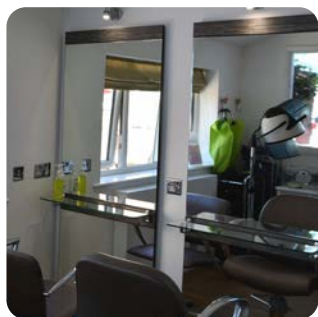
Electronic care planning



Relatives' Gateway



Free WiFi for residents and visitors



What people say about Four Ways

THIS IS TO CERTIFY THAT

Four Ways

HAS A CAREHOME.CO.UK REVIEW SCORE OF



March 2021

Maximum Review Score is 10, and the Score was calculated from 6 Reviews made by residents or family/friends of residents.

Reviews on our website

carehome.co.uk

★★★★★ 23 Nov 2020

My brother went into Four Ways care home in 2018 for a respite, we loved it that much he ended...

Donna W (Sister of Resident)

★★★★★ 13 Oct 2020

Mum has been a resident at Four Ways for a year now. Mum settled in really well with the help of...

Louise P (Daughter of Resident)

★★★★★ 13 Oct 2020

My mum has been at Four Ways since June. She settled in really well and is looked after with...

Debbie O (Daughter of Resident)



As at 26 March 2021 - find more reviews for Four Ways at carehome.co.uk

Important terms and conditions

Deposits including damage charges

We do not require an upfront deposit. We also won't charge a fee to replace carpets or redecorate your room if you vacate it (known as a dilapidation fee).

Running out of private funding

We'll support privately-funded residents to apply for social funding, if their financial situation means they can no longer meet the requirements for privately-funded care, so we will not ask residents to move out.

Notice conditions

If you wish to end your contract with us, please notify the home manager in writing with these notice periods: within 14 days of signing the contract (immediately); before your six-week trial ends (at least 7 days); after your six-week trial (at least four weeks).