

# Woodside Care Village

## Key information including fees



**Good**

Last rated:  
11 November 2022



Woodside  
Care Village

Woodside Care Village  
Mini mart

Woodside Care Village  
Mini mart



Free WiFi at this home

Lorraine Herbert

General Manager



**Valid from 1st April 2023**

### Fees for this home



**Residential care rate** (per week)

**£1584**



**Dementia/advanced residential care rate** (per week)

**£1690**



**Additional supplements**  
(per week - if applicable)

Garden room **£50**



### What's included in your weekly fee

#### Services including...

- room accommodation
- heating and lighting
- laundry services
- access to TV and sitting rooms
- food
- non-alcoholic drinks
- snacks

#### Personal care including...

- care and support from staff
- use of aids and appliances available in the home such as hoists, lifts and occasional use wheelchairs



Fees are payable one month in advance on the first day of each month, usually by standing order. Fees are reviewed annually and will usually rise by no more than 2.0% above the percentage increase in National Living Wage (except in exceptional circumstances)

### How fees compare with other providers locally



As a guide, other providers' fees for residential and dementia care homes (older people) in Kenilworth, Leamington and Warwick range from approximately **£1,100 to £1,800 per week** \*



### Lifestyle services paid for separately

#### Typical services paid for separately include...

- daily papers
- hairdressing charges
- clothing
- dry cleaning
- personal toiletries
- meals for your visitors
- chiropody
- costs of special outings and events
- private healthcare not covered by the NHS
- travel costs e.g. public or private transport to medical appointments

### Funding type accepted at this home



**Privately funded e.g. your own funds**



**CHC or similar**



## Summary of key information

### Key features at Woodside Care Village - Maple Grove (off Spinney Hill), Warwick, CV34 5SS

Woodside Care Village is home for up to 72 older people, people living with dementia and people who are deaf, providing residential care and short-term respite care. It typically has a staffing ratio of 1 member of staff to 3/4 residents. Facilities at the home include:



Single rooms



Ensuite facilities



Household kitchen



Communal lounge & TV



Small households



Outdoor gym



Gardens



Mini golf



Bike-for-two



Giant outdoor chess



Table tennis



Laundrette



Hair salon



Shop



Cafe



Kids zone



Spa bath



Cinema



Memory Maker minibus



Acoustic monitoring



Fire lift to all floors



Circadian lighting



Staff trained in sign language



On a bus route

At every WCS Care home:



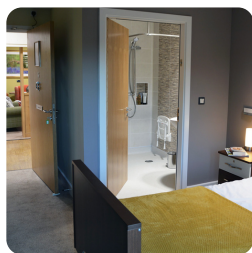
Electronic care planning



Relatives' Gateway



Free Wi-Fi



## What people say about Woodside Care Village

THIS IS TO CERTIFY THAT  
Woodside Care Village

HAS A CAREHOME.CO.UK  
REVIEW SCORE OF



March 2024

Maximum Review Score is 10, and the  
Score was calculated from 13 Reviews made  
by residents or family/friends of residents.

### Reviews on our website



13 Mar 2024

My mother and father were both residents at Woodside until my father's death in October 2020. My...

Elaine J (Daughter of Resident)



11 Mar 2024

No complaints. My mum gets six visits per month from my sister and myself. Mum is always clean,...

Kevin A (Son of Resident)



11 Mar 2024

I am very happy with the way Mum is treated, i.e. respect, dignity, care and thoughtfulness. As a...

S M (Daughter of Resident)

As at 13 March 2024 - find more reviews for Woodside Care Village at [carehome.co.uk](https://carehome.co.uk)

[carehome.co.uk](https://carehome.co.uk)



## Important terms and conditions

### Deposits including damage charges

We do not require an upfront deposit. We also won't charge a fee to replace carpets or redecorate your room if you vacate it (known as a dilapidation fee).

### Running out of private funding

We'll support privately-funded residents to apply for social funding, if their financial situation means they can no longer meet the requirements for privately-funded care, so we will not ask residents to move out.

### Notice conditions

If you wish to end your contract with us, please notify the home manager in writing with these notice periods: within 14 days of signing the contract (immediately); before your six-week trial ends (at least 7 days); after your six-week trial (at least four weeks).